

# FURUTECH

PURE TRANSMISSION



## FT-SWS NCF Plus (R)

Furutech's Ultimate Performance SCHUKO Wall Socket



Non-magnetic Rhodium Plated Conductors Carbon Fiber Finished Front Plate  
(Type: 2-pole+earth; Rating: 16A 250V A.C.)

***The Next Evolution of Furutech's Flagship SCHUKO Wall Socket  
Precision in Every Detail, Perfection in Every Note.***

Furutech proudly introduces the FT-SWS NCF Plus (R)—the latest, most highly refined iteration of our reference-grade SCHUKO wall socket. Building upon the celebrated performance of the original FT-SWS NCF (R), the new Plus version represents a significant step forward in mechanical damping, noise suppression, and overall electrical integrity.

Engineered for today's ultra-high-resolution audio systems, the FT-SWS NCF Plus (R) incorporates a full suite of structural and material enhancements designed to reveal even greater dynamic contrast, purity, and stability from the very first connection point in your AC chain.

### ***A New Benchmark in AC Performance***

At the heart of the FT-SWS NCF Plus (R) is Furutech's exclusive Nano Crystal<sup>2</sup> Formula (NCF)—a hybrid crystalline material that generates negative ions to eliminate static while simultaneously converting thermal distortion into far-infrared energy. Combined with nano-ceramic particles and carbon powder, NCF delivers extraordinary Piezo Effect damping, dramatically reducing mechanical and electrical noise.

While the legacy FT-SWS NCF (R) established itself as a reference for clean, stable AC delivery, the new Plus version pushes performance even further with:

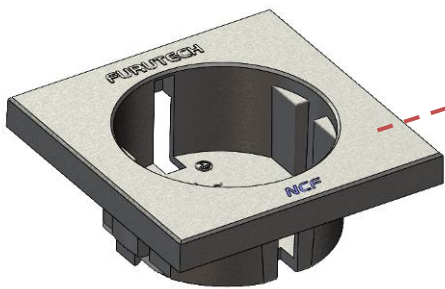
- Enhanced non-resonant structural engineering featuring an upgraded carbon-fiber finished Zn-Mg alloy front plate and advanced multilayer damping architecture.
- New hybrid carbon-fiber TPU coating offering expanded suppression of micro-vibrations.
- Refined internal bracket and brace structures for greater rigidity and stability.
- Furutech's latest patented pressure-plate system, increasing conductor contact area and ensuring a more secure, lower-impedance connection.
- New hybrid carbon-fiber TPU coating offering expanded suppression of micro-vibrations.
- Refined internal bracket and brace structures for greater rigidity and stability.
- Premium non-magnetic rhodium-plated  $\alpha$  (Alpha) pure copper conductors, reinforced by an innovative non-magnetic stainless-steel conductor spring that maintains constant, even contact pressure, ensuring a firm, stable grip on Schuko conductors and a consistently low-impedance connection.
- These improvements collectively elevate the FT-SWS NCF Plus (R) to the highest level of AC performance ever produced by Furutech.

### ***Nano Crystal<sup>2</sup> Formula (NCF)***

Incorporated into selected Furutech products, NCF features a special crystalline material that has two 'active' properties. First, it generates negative ions that eliminate static. Second, it converts thermal energy into far infrared. Furutech combines this remarkable material with nano-sized ceramic particles and carbon powder for their additional 'piezoelectric effect' damping properties. The resulting Nano Crystal<sup>2</sup> Formula is the ultimate electrical and mechanical damping material. Created by Furutech, it is found exclusively in Furutech products.

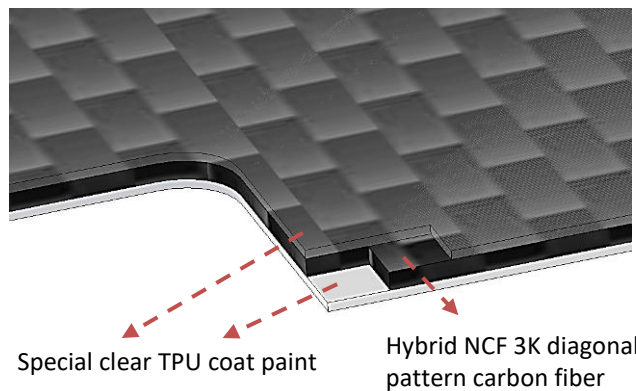
## Features

- Non-magnetic Rhodium-plated  $\alpha$  (Alpha) Pure Copper main Conductor (t : 0.5mm).
- Insulation Materials: Nylon/fiberglass incorporating special "NCF" anti-resonance damping material - nano-sized crystalline, piezo ceramic particles and carbon powder.
- 1.0mm thick Bracket with a Zinc/steel brace plate.
- Carbon fiber finished extremely effective nonresonant coating Cast Zn-Mg Alloy Front Plate.
- Specified for wire diameters of 2.8mm or 5.5 Sq.mm/10AWG Max. (set screw).
- Dimensions: 95.0mm (L) x 95.0mm (W) x 48.0mm(H).
- Furutech's total attention to detail and build quality extends right down to a specially designed patented pressure plate (see below) that increases the contact area of the Alpha Conductors.



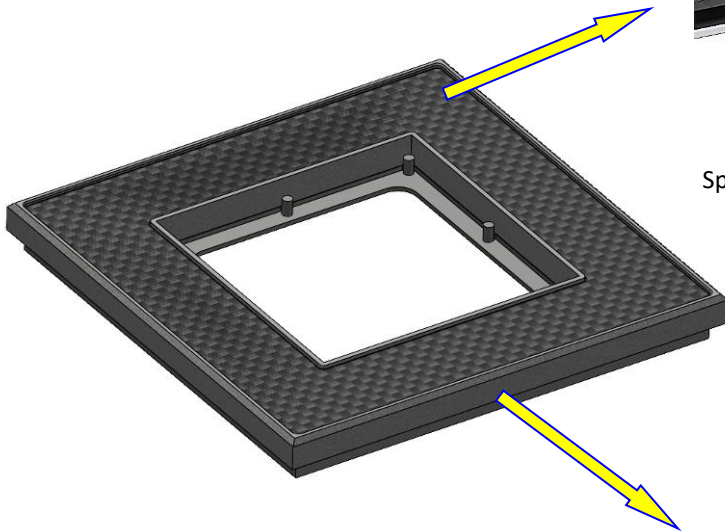
Nylon/fiberglass incorporating special "NCF" anti-resonance damping material

## Multilayer Structure description



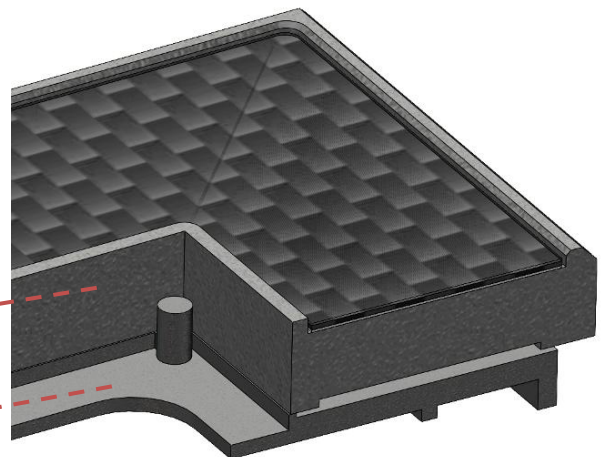
Special clear TPU coat paint

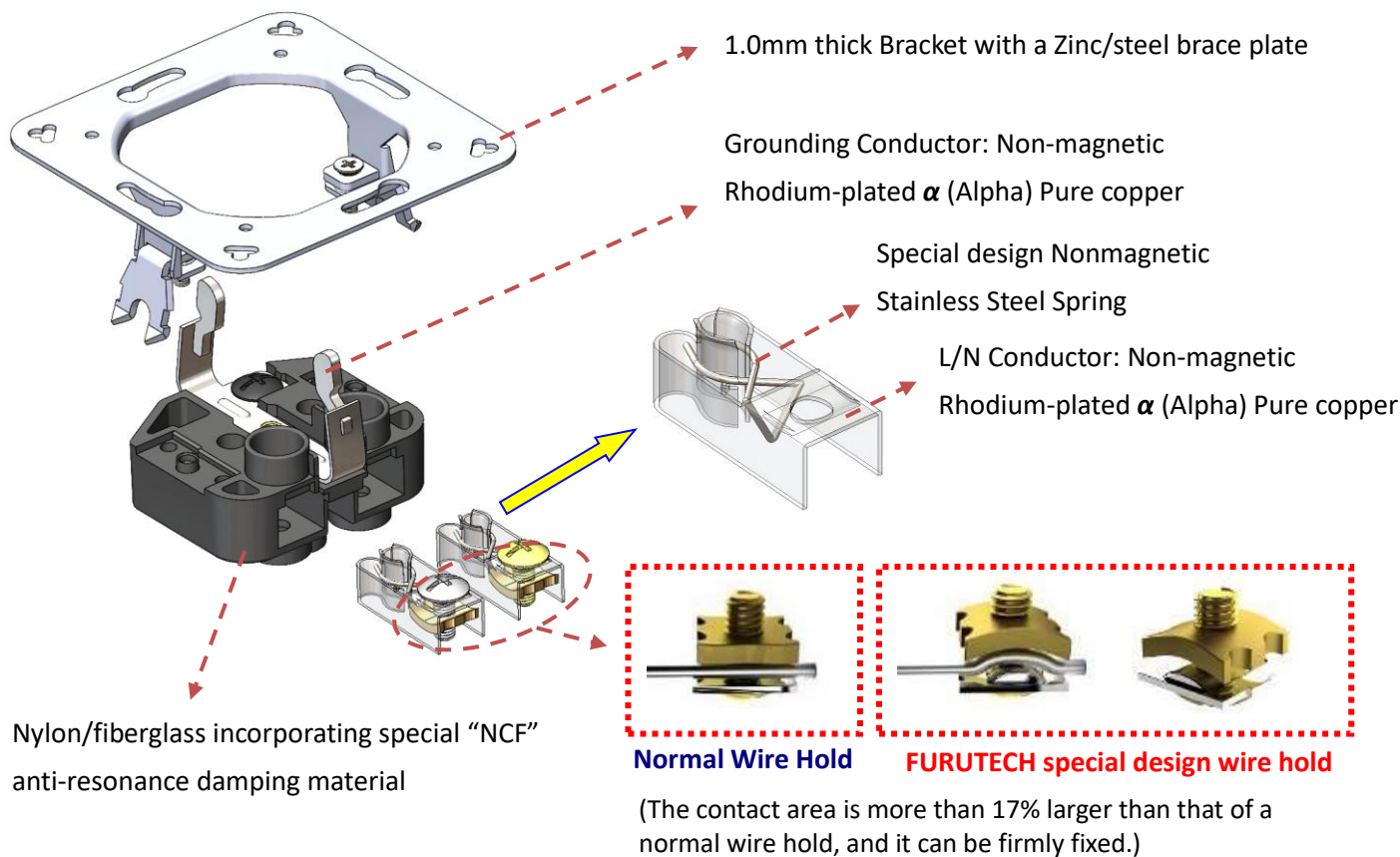
Hybrid NCF 3K diagonal pattern carbon fiber



Special-grade Zinc alloy with an extremely effective nonresonant coating

Nylon/fiberglass incorporating special "NCF" anti-resonance damping material





Product name	Product Introduction	JAN Code
FT-SWS NCF Plus (R)	High End Performance SCHUKO Wall Sockets	<b>4580370445251</b>

All metal parts are treated with \***FURUTECH**  $\alpha$ (Alpha) Process (Super Cryogenic & Demagnetize Treatment. )

**FURUTECH CO., LTD.**    [www.furutech.com](http://www.furutech.com)    [service@furutech.com](mailto:service@furutech.com)

**NCF**<sup>®</sup> is a registered trademark of Furutech Co., Ltd. Japan